

Acta Crystallographica Section E

## Structure Reports

Online

ISSN 1600-5368

## 2-(5-Bromo-3-methylsulfanyl-1-benzofuran-2-yl)acetic acid

Hong Dae Choi,<sup>a</sup> Pil Ja Seo,<sup>a</sup> Byeng Wha Son<sup>b</sup> and Uk Lee<sup>b\*</sup><sup>a</sup>Department of Chemistry, Donggeui University, San 24 Kaya-dong Busanjin-gu, Busan 614-714, Republic of Korea, and <sup>b</sup>Department of Chemistry, Pukyong National University, 599-1 Daeyeon 3-dong Nam-gu, Busan 608-737, Republic of Korea

Correspondence e-mail: uklee@pknu.ac.kr

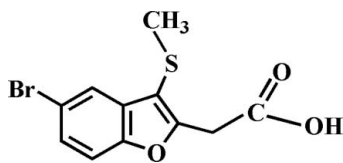
Received 4 February 2009; accepted 15 February 2009

Key indicators: single-crystal X-ray study;  $T = 100$  K; mean  $\sigma(\text{C}-\text{C}) = 0.003$  Å;  $R$  factor = 0.027;  $wR$  factor = 0.072; data-to-parameter ratio = 16.6.

The title compound,  $\text{C}_{11}\text{H}_9\text{BrO}_3\text{S}$ , was prepared by alkaline hydrolysis of ethyl 2-(5-bromo-3-methylsulfanyl-1-benzofuran-2-yl)acetate. In the crystal structure, the carboxyl groups are involved in intermolecular  $\text{O}-\text{H}\cdots\text{O}$  hydrogen bonds, which link the molecules into centrosymmetric dimers. These dimers are further packed into stacks along the  $c$  axis by weak  $\text{C}-\text{H}\cdots\pi$  interactions. In addition, the stacked molecules exhibit a  $\text{Br}\cdots\text{S}$  interaction of 3.4787 (7) Å.

## Related literature

For the crystal structures of similar 2-(3-methylsulfanyl-1-benzofuran-2-yl)acetic acid derivatives, see: Choi *et al.* (2008*a,b*).



## Experimental

## Crystal data

 $\text{C}_{11}\text{H}_9\text{BrO}_3\text{S}$  $M_r = 301.15$ 

Monoclinic,  $P2_1/c$   
 $a = 4.9976$  (4) Å  
 $b = 29.740$  (2) Å  
 $c = 7.6780$  (6) Å  
 $\beta = 92.401$  (1)°  
 $V = 1140.17$  (15) Å<sup>3</sup>

$Z = 4$   
 Mo  $K\alpha$  radiation  
 $\mu = 3.78$  mm<sup>-1</sup>  
 $T = 100$  K  
 $0.50 \times 0.30 \times 0.15$  mm

## Data collection

Bruker SMART CCD diffractometer  
 Absorption correction: multi-scan (SADABS; Sheldrick, 2000)  
 $T_{\min} = 0.261$ ,  $T_{\max} = 0.562$

6872 measured reflections  
 2483 independent reflections  
 2178 reflections with  $I > 2\sigma(I)$   
 $R_{\text{int}} = 0.028$

## Refinement

$R[F^2 > 2\sigma(F^2)] = 0.027$   
 $wR(F^2) = 0.072$   
 $S = 1.11$   
 2483 reflections  
 150 parameters

H atoms treated by a mixture of independent and constrained refinement  
 $\Delta\rho_{\text{max}} = 0.32$  e Å<sup>-3</sup>  
 $\Delta\rho_{\text{min}} = -0.56$  e Å<sup>-3</sup>

Table 1

Hydrogen-bond geometry (Å, °).

| $D-\text{H}\cdots A$                                | $D-\text{H}$ | $\text{H}\cdots A$ | $D\cdots A$ | $D-\text{H}\cdots A$ |
|---|--------------|--------------------|-------------|----------------------|
| $\text{O}3-\text{H}12\cdots\text{O}2^i$             | 0.81 (4)     | 1.91 (4)           | 2.707 (2)   | 169 (4)              |
| $\text{C}11-\text{H}11\text{C}\cdots\text{C}g^{ii}$ | 0.96         | 3.22               | 3.904 (3)   | 129                  |

Symmetry codes: (i)  $-x + 1, -y + 1, -z$ ; (ii)  $x, y, z - 1$ .  $Cg$  is the centroid of the C2-C7 benzene ring.

Data collection: SMART (Bruker, 2001); cell refinement: SAINT (Bruker, 2001); data reduction: SAINT; program(s) used to solve structure: SHELXS97 (Sheldrick, 2008); program(s) used to refine structure: SHELXL97 (Sheldrick, 2008); molecular graphics: ORTEP-3 (Farrugia, 1997) and DIAMOND (Brandenburg, 1998); software used to prepare material for publication: SHELXL97.

Supplementary data and figures for this paper are available from the IUCr electronic archives (Reference: FJ2195).

## References

- Brandenburg, K. (1998). DIAMOND. Crystal Impact GbR, Bonn, Germany.  
 Bruker (2001). SAINT and SMART. Bruker AXS Inc., Madison, Wisconsin, USA.  
 Choi, H. D., Seo, P. J., Son, B. W. & Lee, U. (2008*a*). Acta Cryst. E64, o1598.  
 Choi, H. D., Seo, P. J., Son, B. W. & Lee, U. (2008*b*). Acta Cryst. E64, o1688.  
 Farrugia, L. J. (1997). J. Appl. Cryst. 30, 565.  
 Sheldrick, G. M. (2000). SADABS. University of Göttingen, Germany.  
 Sheldrick, G. M. (2008). Acta Cryst. A64, 112–122.

**supplementary materials**

*Acta Cryst.* (2009). E65, o563 [ doi:10.1107/S1600536809005376 ]

## 2-(5-Bromo-3-methylsulfanyl-1-benzofuran-2-yl)acetic acid

H. D. Choi, P. J. Seo, B. W. Son and U. Lee

### Comment

As a part of our ongoing studies on the synthesis and structures of 2-(3-methylsulfanyl-1-benzofuran-2-yl)acetic acid analogues, the crystal structure of 2-(5,7-dimethyl-3-methylsulfanyl-1-benzofuran-2-yl)acetic acid (Choi *et al.*, 2008*a*) and 2-(6,7-dimethyl-3-methylsulfanyl-1-benzofuran-2-yl)acetic acid (Choi *et al.*, 2008*b*) have been described in the literature. Here we report the crystal structure of the title compound, 2-(5-bromo-3-methylsulfanyl-1-benzofuran-2-yl)acetic acid (Fig. 1).

The benzofuran unit is essentially planar, with a mean deviation of 0.011 (2) Å from the least-squares plane defined by the nine constituent atoms. In crystal structure, the carboxyl groups are involved in intermolecular O—H···O hydrogen bonds (Fig. 2 and Table 1; symmetry code as in Fig. 2), which link the molecules into centrosymmetric dimers. These dimers are further packed into stacks along the *c*-axis by weak C—H··· $\pi$  interactions, with a C11—H11C···Cg<sup>ii</sup> separation of 3.22 Å (Fig. 2 and Table 1; Cg is the centroid of the C2–C7 benzene ring, symmetry code as in Fig. 2). Additionally, the stacked molecules exhibit a Br···S interaction, with a C4—Br···S<sup>iii</sup> distance of 3.4787 (7) Å (symmetry code as in Fig. 2).

### Experimental

Ethyl 2-(5-bromo-3-methylsulfanyl-1-benzofuran-2-yl)acetate (329 mg, 1.0 mmol) was added to a solution of potassium hydroxide (337 mg, 6.0 mmol) in water (25 ml) and methanol (25 ml), and the mixture was refluxed for 5h, then cooled. Water was added, and the solution was extracted with dichloromethane. The aqueous layer was acidified to pH 1 with concentrated hydrochloric acid and then extracted with chloroform, dried over magnesium sulfate, filtered and concentrated under vacuum. The residue was purified by column chromatography (ethyl acetate) to afford the title compound as a colorless solid [yield 88%, m.p. 444-445 K;  $R_f$  = 0.56 (ethyl acetate)]. Single crystals suitable for X-ray diffraction were prepared by evaporation of a solution of the title compound in benzene at room temperature. Spectroscopic analysis: <sup>1</sup>H NMR (CDCl<sub>3</sub>, 400 MHz)  $\delta$  2.32 (s, 3H), 4.04 (s, 2H), 7.33 (d, *J* = 8.8 Hz, 1H), 7.41 (dd, *J* = 8.8 Hz and *J* = 1.84 Hz, 1H), 7.77 (d, *J* = 2.2 Hz, 1H), 10.03 (s, 1H); EI-MS 302 [M+2], 300 [M<sup>+</sup>].

### Refinement

The H atom of O3 was positioned in a difference Fourier map and refined freely. Other H atoms were geometrically positioned and refined using a riding model, with C—H = 0.93 (aromatic), 0.97 (methylene), and 0.96 Å (methyl) H atoms, respectively, and with  $U_{iso}(H) = 1.2U_{eq}(C)$  (aromatic, methylene), and  $1.5U_{eq}(C)$  (methyl) H atoms.

## Figures

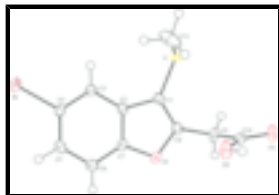


Fig. 1. The molecular structure of the title compound, showing displacement ellipsoids drawn at the 50% probability level.

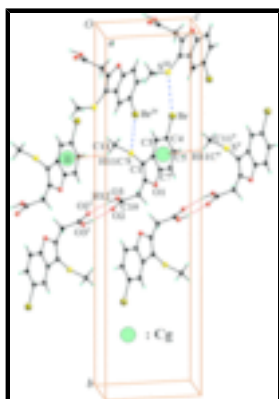


Fig. 2. C—H... $\pi$  and Br...S interactions, and hydrogen bonds (dotted lines) in the title compound. Cg denotes the ring centroid. [Symmetry code: (i)  $-x+1, -y+1, -z$ ; (ii)  $x, y+1, z-1$ ; (iii)  $x-1, -y+1/2, z+1/2$ ; (iv)  $x+1, -y+1/2, z-1/2$ ; (v)  $x, y, z+1$ .]

## 2-(5-Bromo-3-methylsulfonyl-1-benzofuran-2-yl)acetic acid

### Crystal data

$C_{11}H_9BrO_3S$

$M_r = 301.15$

Monoclinic,  $P2_1/c$

Hall symbol:  $-P\ 2ybc$

$a = 4.9976$  (4) Å

$b = 29.740$  (2) Å

$c = 7.6780$  (6) Å

$\beta = 92.401$  (1)°

$V = 1140.17$  (15) Å<sup>3</sup>

$Z = 4$

$F_{000} = 600$

$D_x = 1.754$  Mg m<sup>-3</sup>

Melting point = 404–405 K

Mo  $K\alpha$  radiation

$\lambda = 0.71073$  Å

Cell parameters from 3612 reflections

$\theta = 2.6$ – $28.3$ °

$\mu = 3.78$  mm<sup>-1</sup>

$T = 100$  K

Block, colorless

$0.50 \times 0.30 \times 0.15$  mm

### Data collection

Bruker SMART CCD  
diffractometer

Radiation source: fine-focus sealed tube

Monochromator: graphite

Detector resolution: 10.0 pixels mm<sup>-1</sup>

$T = 100$  K

$\phi$  and  $\omega$  scans

Absorption correction: multi-scan  
(SADABS; Sheldrick, 2000)

2483 independent reflections

2178 reflections with  $I > 2\sigma(I)$

$R_{int} = 0.028$

$\theta_{max} = 27.0$ °

$\theta_{min} = 1.4$ °

$h = -6 \rightarrow 6$

$k = -37 \rightarrow 19$

$T_{\min} = 0.261$ ,  $T_{\max} = 0.562$   
6872 measured reflections

$l = -9 \rightarrow 9$

### Refinement

Refinement on  $F^2$   
Least-squares matrix: full

$R[F^2 > 2\sigma(F^2)] = 0.027$

$wR(F^2) = 0.072$

$S = 1.11$

2483 reflections

150 parameters

Primary atom site location: structure-invariant direct methods

Secondary atom site location: difference Fourier map

Hydrogen site location: difference Fourier map

H atoms treated by a mixture of independent and constrained refinement

$$w = 1/[\sigma^2(F_o^2) + (0.0331P)^2 + 0.6004P]$$

where  $P = (F_o^2 + 2F_c^2)/3$

$(\Delta/\sigma)_{\max} < 0.001$

$\Delta\rho_{\max} = 0.32 \text{ e } \text{\AA}^{-3}$

$\Delta\rho_{\min} = -0.56 \text{ e } \text{\AA}^{-3}$

Extinction correction: none

### Special details

**Geometry.** All esds (except the esd in the dihedral angle between two l.s. planes) are estimated using the full covariance matrix. The cell esds are taken into account individually in the estimation of esds in distances, angles and torsion angles; correlations between esds in cell parameters are only used when they are defined by crystal symmetry. An approximate (isotropic) treatment of cell esds is used for estimating esds involving l.s. planes.

**Refinement.** Refinement of  $F^2$  against ALL reflections. The weighted R-factor  $wR$  and goodness of fit  $S$  are based on  $F^2$ , conventional R-factors  $R$  are based on  $F$ , with  $F$  set to zero for negative  $F^2$ . The threshold expression of  $F^2 > 2\sigma(F^2)$  is used only for calculating R-factors(gt) etc. and is not relevant to the choice of reflections for refinement. R-factors based on  $F^2$  are statistically about twice as large as those based on  $F$ , and R-factors based on ALL data will be even larger.

### Fractional atomic coordinates and isotropic or equivalent isotropic displacement parameters ( $\text{\AA}^2$ )

|     | <i>x</i>     | <i>y</i>     | <i>z</i>    | $U_{\text{iso}}^*/U_{\text{eq}}$ |
|-----|--------------|--------------|-------------|----------------------------------|
| Br  | -0.17879 (5) | 0.275363 (8) | 0.83802 (3) | 0.02932 (10)                     |
| S   | 0.64485 (11) | 0.33767 (2)  | 0.31284 (8) | 0.02358 (14)                     |
| O1  | 0.3933 (3)   | 0.43916 (5)  | 0.5972 (2)  | 0.0218 (3)                       |
| O2  | 0.7696 (3)   | 0.48334 (6)  | 0.1003 (2)  | 0.0262 (4)                       |
| O3  | 0.3598 (3)   | 0.47267 (7)  | 0.2002 (2)  | 0.0276 (4)                       |
| H12 | 0.310 (7)    | 0.4829 (12)  | 0.107 (5)   | 0.057 (11)*                      |
| C1  | 0.4952 (4)   | 0.37501 (8)  | 0.4556 (3)  | 0.0180 (4)                       |
| C2  | 0.2974 (4)   | 0.36437 (8)  | 0.5820 (3)  | 0.0179 (4)                       |
| C3  | 0.1697 (4)   | 0.32509 (8)  | 0.6316 (3)  | 0.0191 (5)                       |
| H3  | 0.2048       | 0.2976       | 0.5797      | 0.023*                           |
| C4  | -0.0124 (5)  | 0.32894 (8)  | 0.7622 (3)  | 0.0200 (5)                       |
| C5  | -0.0721 (5)  | 0.36984 (8)  | 0.8405 (3)  | 0.0235 (5)                       |
| H5  | -0.1987      | 0.3708       | 0.9258      | 0.028*                           |
| C6  | 0.0554 (5)   | 0.40921 (8)  | 0.7925 (3)  | 0.0234 (5)                       |
| H6  | 0.0190       | 0.4368       | 0.8438      | 0.028*                           |
| C7  | 0.2403 (4)   | 0.40497 (8)  | 0.6634 (3)  | 0.0190 (5)                       |

## supplementary materials

---

|      |            |              |            |            |
|------|------------|--------------|------------|------------|
| C8   | 0.5450 (4) | 0.41944 (8)  | 0.4709 (3) | 0.0198 (5) |
| C9   | 0.7313 (5) | 0.44956 (8)  | 0.3800 (3) | 0.0226 (5) |
| H9A  | 0.8911     | 0.4326       | 0.3554     | 0.027*     |
| H9B  | 0.7847     | 0.4737       | 0.4588     | 0.027*     |
| C10  | 0.6219 (4) | 0.47002 (8)  | 0.2118 (3) | 0.0192 (5) |
| C11  | 0.3591 (6) | 0.32394 (13) | 0.1715 (4) | 0.0455 (8) |
| H11A | 0.2212     | 0.3110       | 0.2391     | 0.068*     |
| H11B | 0.4113     | 0.3027       | 0.0850     | 0.068*     |
| H11C | 0.2925     | 0.3508       | 0.1152     | 0.068*     |

### Atomic displacement parameters ( $\text{\AA}^2$ )

|     | $U^{11}$     | $U^{22}$     | $U^{33}$     | $U^{12}$      | $U^{13}$     | $U^{23}$     |
|-----|--------------|--------------|--------------|---------------|--------------|--------------|
| Br  | 0.03467 (16) | 0.02278 (15) | 0.03138 (16) | -0.00670 (10) | 0.01158 (10) | 0.00524 (10) |
| S   | 0.0194 (3)   | 0.0267 (3)   | 0.0250 (3)   | 0.0028 (2)    | 0.0052 (2)   | -0.0036 (3)  |
| O1  | 0.0273 (8)   | 0.0150 (8)   | 0.0234 (8)   | -0.0025 (7)   | 0.0048 (7)   | 0.0025 (7)   |
| O2  | 0.0198 (8)   | 0.0332 (10)  | 0.0260 (9)   | 0.0008 (7)    | 0.0053 (7)   | 0.0115 (8)   |
| O3  | 0.0169 (8)   | 0.0398 (11)  | 0.0262 (9)   | -0.0008 (7)   | 0.0004 (7)   | 0.0135 (8)   |
| C1  | 0.0180 (10)  | 0.0203 (11)  | 0.0159 (10)  | 0.0017 (9)    | 0.0022 (8)   | 0.0024 (9)   |
| C2  | 0.0176 (10)  | 0.0206 (11)  | 0.0156 (10)  | 0.0014 (9)    | 0.0013 (8)   | 0.0023 (9)   |
| C3  | 0.0234 (11)  | 0.0161 (11)  | 0.0178 (11)  | -0.0001 (9)   | 0.0010 (9)   | -0.0008 (9)  |
| C4  | 0.0234 (11)  | 0.0186 (11)  | 0.0180 (11)  | -0.0037 (9)   | 0.0007 (9)   | 0.0048 (9)   |
| C5  | 0.0263 (12)  | 0.0265 (13)  | 0.0183 (11)  | 0.0000 (10)   | 0.0066 (9)   | 0.0001 (10)  |
| C6  | 0.0294 (12)  | 0.0201 (12)  | 0.0210 (12)  | 0.0019 (10)   | 0.0043 (9)   | -0.0021 (10) |
| C7  | 0.0208 (11)  | 0.0162 (11)  | 0.0199 (11)  | -0.0012 (9)   | 0.0003 (9)   | 0.0037 (9)   |
| C8  | 0.0194 (10)  | 0.0224 (12)  | 0.0176 (11)  | 0.0014 (9)    | 0.0010 (8)   | 0.0036 (9)   |
| C9  | 0.0196 (11)  | 0.0232 (12)  | 0.0250 (12)  | -0.0020 (9)   | 0.0003 (9)   | 0.0084 (10)  |
| C10 | 0.0201 (11)  | 0.0149 (11)  | 0.0226 (11)  | 0.0002 (9)    | 0.0027 (9)   | 0.0017 (9)   |
| C11 | 0.0288 (14)  | 0.073 (2)    | 0.0341 (15)  | 0.0025 (15)   | -0.0009 (12) | -0.0262 (16) |

### Geometric parameters ( $\text{\AA}$ , $^\circ$ )

|                      |            |          |             |
|----------------------|------------|----------|-------------|
| Br—C4                | 1.900 (2)  | C3—H3    | 0.9300      |
| Br—S <sup>i</sup>    | 3.4787 (7) | C4—C5    | 1.395 (3)   |
| S—C1                 | 1.750 (2)  | C5—C6    | 1.390 (3)   |
| S—C11                | 1.804 (3)  | C5—H5    | 0.9300      |
| O1—C7                | 1.382 (3)  | C6—C7    | 1.389 (3)   |
| O1—C8                | 1.386 (3)  | C6—H6    | 0.9300      |
| O2—C10               | 1.220 (3)  | C8—C9    | 1.487 (3)   |
| O3—C10               | 1.312 (3)  | C9—C10   | 1.509 (3)   |
| O3—H12               | 0.81 (4)   | C9—H9A   | 0.9700      |
| C1—C8                | 1.349 (3)  | C9—H9B   | 0.9700      |
| C1—C2                | 1.449 (3)  | C11—H11A | 0.9600      |
| C2—C3                | 1.392 (3)  | C11—H11B | 0.9600      |
| C2—C7                | 1.395 (3)  | C11—H11C | 0.9600      |
| C3—C4                | 1.387 (3)  |          |             |
| C4—Br—S <sup>i</sup> | 155.04 (7) | O1—C7—C6 | 126.2 (2)   |
| C1—S—C11             | 99.90 (12) | O1—C7—C2 | 110.21 (19) |

|                          |              |               |              |
|--------------------------|--------------|---------------|--------------|
| C7—O1—C8                 | 105.87 (17)  | C6—C7—C2      | 123.6 (2)    |
| C10—O3—H12               | 111 (3)      | C1—C8—O1      | 111.8 (2)    |
| C8—C1—C2                 | 106.5 (2)    | C1—C8—C9      | 131.8 (2)    |
| C8—C1—S                  | 126.44 (18)  | O1—C8—C9      | 116.4 (2)    |
| C2—C1—S                  | 127.04 (18)  | C8—C9—C10     | 115.67 (19)  |
| C3—C2—C7                 | 120.0 (2)    | C8—C9—H9A     | 108.4        |
| C3—C2—C1                 | 134.4 (2)    | C10—C9—H9A    | 108.4        |
| C7—C2—C1                 | 105.6 (2)    | C8—C9—H9B     | 108.4        |
| C4—C3—C2                 | 116.8 (2)    | C10—C9—H9B    | 108.4        |
| C4—C3—H3                 | 121.6        | H9A—C9—H9B    | 107.4        |
| C2—C3—H3                 | 121.6        | O2—C10—O3     | 124.4 (2)    |
| C3—C4—C5                 | 122.8 (2)    | O2—C10—C9     | 121.6 (2)    |
| C3—C4—Br                 | 117.46 (18)  | O3—C10—C9     | 114.0 (2)    |
| C5—C4—Br                 | 119.68 (17)  | S—C11—H11A    | 109.5        |
| C6—C5—C4                 | 120.8 (2)    | S—C11—H11B    | 109.5        |
| C6—C5—H5                 | 119.6        | H11A—C11—H11B | 109.5        |
| C4—C5—H5                 | 119.6        | S—C11—H11C    | 109.5        |
| C7—C6—C5                 | 116.0 (2)    | H11A—C11—H11C | 109.5        |
| C7—C6—H6                 | 122.0        | H11B—C11—H11C | 109.5        |
| C5—C6—H6                 | 122.0        |               |              |
| C11—S—C1—C8              | -113.0 (2)   | C5—C6—C7—O1   | -178.9 (2)   |
| C11—S—C1—C2              | 67.9 (2)     | C5—C6—C7—C2   | 0.9 (4)      |
| C8—C1—C2—C3              | -178.7 (2)   | C3—C2—C7—O1   | 178.60 (19)  |
| S—C1—C2—C3               | 0.5 (4)      | C1—C2—C7—O1   | -1.1 (2)     |
| C8—C1—C2—C7              | 0.9 (2)      | C3—C2—C7—C6   | -1.3 (4)     |
| S—C1—C2—C7               | -179.91 (17) | C1—C2—C7—C6   | 179.1 (2)    |
| C7—C2—C3—C4              | 0.2 (3)      | C2—C1—C8—O1   | -0.4 (3)     |
| C1—C2—C3—C4              | 179.8 (2)    | S—C1—C8—O1    | -179.63 (16) |
| C2—C3—C4—C5              | 1.1 (3)      | C2—C1—C8—C9   | 178.6 (2)    |
| C2—C3—C4—Br              | -177.68 (16) | S—C1—C8—C9    | -0.6 (4)     |
| S <sup>i</sup> —Br—C4—C3 | -12.5 (3)    | C7—O1—C8—C1   | -0.2 (2)     |
| S <sup>i</sup> —Br—C4—C5 | 168.77 (12)  | C7—O1—C8—C9   | -179.39 (19) |
| C3—C4—C5—C6              | -1.4 (4)     | C1—C8—C9—C10  | 87.7 (3)     |
| Br—C4—C5—C6              | 177.28 (18)  | O1—C8—C9—C10  | -93.3 (3)    |
| C4—C5—C6—C7              | 0.4 (3)      | C8—C9—C10—O2  | -157.1 (2)   |
| C8—O1—C7—C6              | -179.3 (2)   | C8—C9—C10—O3  | 24.1 (3)     |
| C8—O1—C7—C2              | 0.8 (2)      |               |              |

Symmetry codes: (i)  $x-1, -y+1/2, z+1/2$ .

*Hydrogen-bond geometry* ( $\text{\AA}, ^\circ$ )

| $D-H\cdots A$                       | $D-H$    | $H\cdots A$ | $D\cdots A$ | $D-H\cdots A$ |
|-------------------------------------|----------|-------------|-------------|---------------|
| O3—H12 $\cdots$ O2 <sup>ii</sup>    | 0.81 (4) | 1.91 (4)    | 2.707 (2)   | 169 (4)       |
| C11—H11C $\cdots$ Cg <sup>iii</sup> | 0.96     | 3.22        | 3.904 (3)   | 129           |

Symmetry codes: (ii)  $-x+1, -y+1, -z$ ; (iii)  $x, y, z-1$ .

Fig. 1

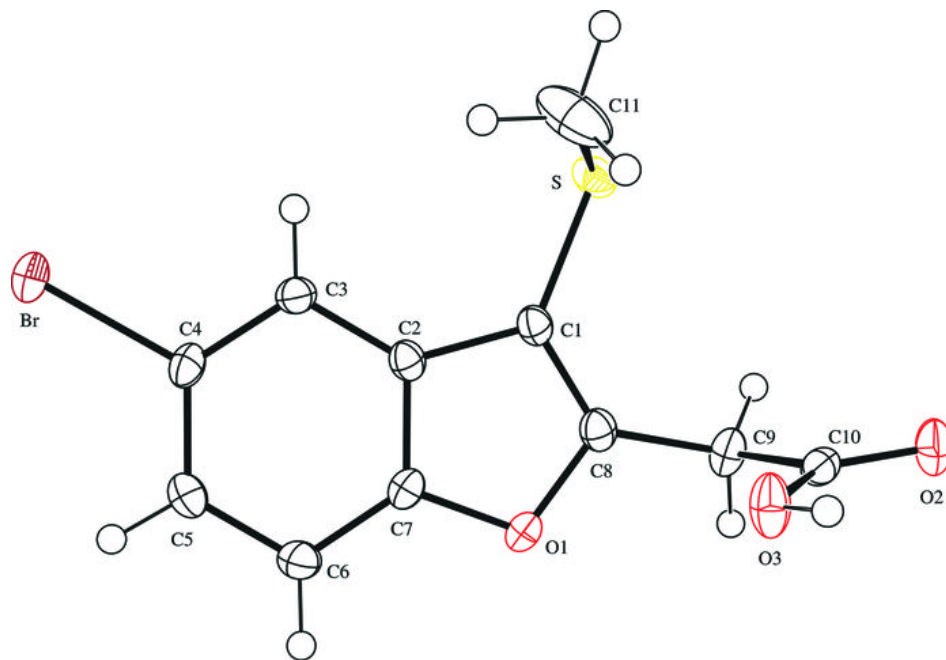




Fig. 2

